

Permian Sea Coral



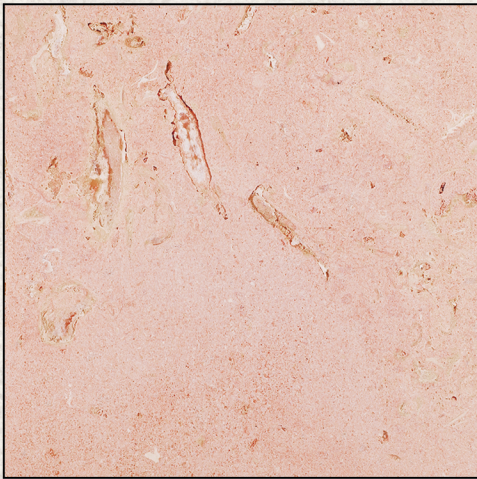
Cedar Hill Cream



Hadrian



TexaStone Pink



Desert Sunset



Texas Pearl



PLATINUM QUARRIER
ANSI/NSC 373-2013
C0144473-102

TEXASTONE
QUARRIES

www.texastone.com



PLATINUM FABRICATOR
ANSI/NSC 373-2013
C0144473-103

TEXASTONE QUARRIES

www.texastone.com

Sustainability at TexaStone Quarries

TexaStone Quarries started the path to becoming more sustainable in 2013 earning the first ever certifications in the Stone Industry under the ANSI/NSC 373 Standard. We were proud to be awarded Gold Quarrier and Silver Fabricator in 2014. Over the next three years we focused on improving our operations even more. In June 2017, we successfully achieved the Platinum level of certification in both our Quarry and Fabrication operations.

About the NSC 373 Standard

The ANSI/NSC 373 Sustainable Production of Natural Dimension Stone was created to recognize and drive sustainability practices in the natural stone industry. The standard applies to quarriers and processors of natural dimension stone and offers criteria such as environmental, ecological, social responsibility and human health/safety parameters to follow. It is based on both required and optional point totals to achieve a certification level of Bronze, Silver, Gold or Platinum. Monitoring of the standard's criteria is done year-round with yearly audits from NSF and re-certification through a site visit every three years.

Recently, this standard has been recognized by the USGBC's LEED v4 building certification program and ILFI's Living Building Challenge version 3.1. This opens the door for design teams to utilize natural stone in their projects to reach their sustainability goals.

The Standard was developed by the Natural Stone Council, NSF International and Ecoform.



PLATINUM QUARRIER
ANSI/NSC 373-2013
C0144473-102



PLATINUM FABRICATOR
ANSI/NSC 373-2013
C0144473-103

EGGEMEYER'S GENERAL STORE SAN ANGELO, TEXAS

Eggemeyer's General Store, along with the surrounding buildings in the Historic District of San Angelo, TX, was originally designed by architect Oscar Ruffini (1858-1957). Providing continuity within the District was a main factor for the owner's interest in choosing limestone from a nearby quarry for renovating the storefront. Of all the materials available to architects for the construction of courthouses, schools, residences, and commercial buildings throughout Texas, limestone has been the obvious choice for the most lasting and stately impressions. Many elements of Ruffini's original designs were incorporated into the final design of this project to capture the architectural antecedents that helped define the culture and design within the area.

Another factor for choosing limestone was to serve as a reminder of the importance of staying true to heritage, and to encourage more use of locally-sourced material. The entire façade was clad with rich, cream colored Cedar Hill Cream limestone from TexaStone Quarries. Every element was hand crafted, from the base stones to the arched cornice which contained the largest pieces weighing 3,000 lbs each. These allowed the design to appear grand in stature, but not overpower the constraints of the façade. Other elements were fabricated in sections. Large panels above the doors and windows completed the openings and the limestone transitioned to a band where the original masonry existed. Limestone panel veneer completes the façade between the corbels and up to the center cornice arch.



The project presented its own unique challenges with designing around an existing structure. The success was based on the skilled masons, their craftsmanship and the professional relationships that were developed over time.

The completed design provides continuity within the historic district and will easily tie in with future projects.

Design Team: Henry Schmidt

Client: Eric Eggemeyer

Mason: A J Langford Masonry

Stone Supplier: TexaStone Quarries, Garden City, TX



TEXASTONE QUARRIES

www.texastone.com

TESORO HEADQUARTERS
SAN ANTONIO, TEXAS

Tesoro's new corporate campus headquarters is located on a 40-acre wooded site in the hills north of downtown San Antonio, TX. The facility includes 600,000 square feet of office space divided between two buildings; a 14-story mid-rise and a 6 story low-rise. The design team focused on creating a new, iconic presence for Tesoro, while remaining respectful of the landscape. To this end, the team chose to use local Texas materials to both reinforce the regional flavor and target a sustainable design goal of LEED Silver certification.

Native Texas Pearl limestone highlights major architectural features on both the exterior and interior of the project. A limestone structure forms the main "Stonehenge" entrance and leads into the grand double-height lobby that connects the two buildings. Also accented in limestone are the employee entrance from the outdoor courtyard and a dramatic "architectural slot" that extends 14 stories high along the building's side and is visible from the highway. A stunning three-level monumental stair is one of the campus' most spectacular design features, with an elliptical shape to mimic the curves of the building. Ribbon Sapele wood panels, Permian Sea Coral limestone floors, glass and stainless steel handrails, and custom glass treads that are lit from within.



Design Firm: Gensler
General Contractor: D.E. Harvey Builders
Stone Installer: American Stone Company of Texas, LP
Stone Supplier: TexaStone Quarries, Garden City, TX

TEXASTONE
QUARRIES

www.texastone.com

CEDAR HILL GOVERNMENT CENTER CEDAR HILL, TEXAS

For the first time in Texas history, three community functions are housed under one roof.

The Cedar Hill Government Center houses City Hall, the Police Department and the administrative offices of the independent school district. This unique assembly of activities was generated for public convenience, economy of operations, and greater construction value.

The effective use of public space motivated this unique assembly of activities.

TexaStone Pink, a rose colored limestone, wraps each of the three major structures facing Uptown Boulevard. The sense of permanence associated with older Texas civic structures is heightened by the use of 40,000 square feet of limestone applied in four patterns; six course sizes and three finishes. The erection of varied combinations provides articulated surfaces in the strong Texas sunlight. Smooth sawn blocks form a continuous stepped five-foot band along the top of the three structures, while rusticated blocks form the building's base. In between, ashlar patterned blocks form a field with random placement of larger blocks, belt courses and special window sill units. Large vertical windows regularly punctuate the stone.



Design Architect: Malcolm Holzman, Holzman Moss Architecture
General Contractor: Hunt Construction
Architect of Record: Wiginton Hooker Jeffrey Architects
Landscape Architect: Newman Jackson Bieberstein
Stone Supplier: TexaStone Quarries, Garden City, TX

TEXASTONE QUARRIES

www.texastone.com

Marble Institute of America
Pinnacle Award

Commercial Exterior
Award of Excellence

Building Stone Institute
Tucker Design Award

Winner

GEORGE A. PUREFOY MUNICIPAL CENTER FRISCO, TEXAS

Designed by Malcolm Holzman to have elements in keeping with the Richard Clayton designs of the early 1900s, this silver LEED certified project utilizes stone found in the region.

The primary material, West Texas Hadrian limestone, was utilized in six different stone patterns. The patterns consist of a mixture of machine smooth fabricated stones with various sizes of split face materials and intermingled the two various sizes and finishes. The limestone was also utilized in half round radial face machine smooth column covers, machine smooth sills with hand pitched edges and coping. The split face limestone also returns through the wall into the interior of the library.



Design by: Malcolm Holzman, Holzman Moss Architecture, New York, NY
Stone Installer: Dee Brown, Inc., Dallas, TX
Stone Suppliers: TexaStone Quarries, Garden City, TX (limestone)
Cold Spring Granite, Cold Spring, MN (granite)

TEXASTONE QUARRIES

www.texastone.com

Medical Facility

Cedar Hill Cream is used in the landscaping areas. The walls feature alternating split-faced veneer and honed bands, with a honed cap.



TEXAS STONE
QUARRIES

GENUINE STONE



Municipal Complex

Permian Sea Coral can be found on the interior or exterior of this 750 foot long serpentine wall. The load bearing wall features split-face in a random ashlar pattern along with sawn lintels and bands.



Commercial Facility



Cedar Hill Cream is used for both interior and exterior applications. The tumbled stone was used as the typical field stone. Honed panels are used around animal exhibits.

TEXASSTONE

QUARRIES
GENUINE STONE 

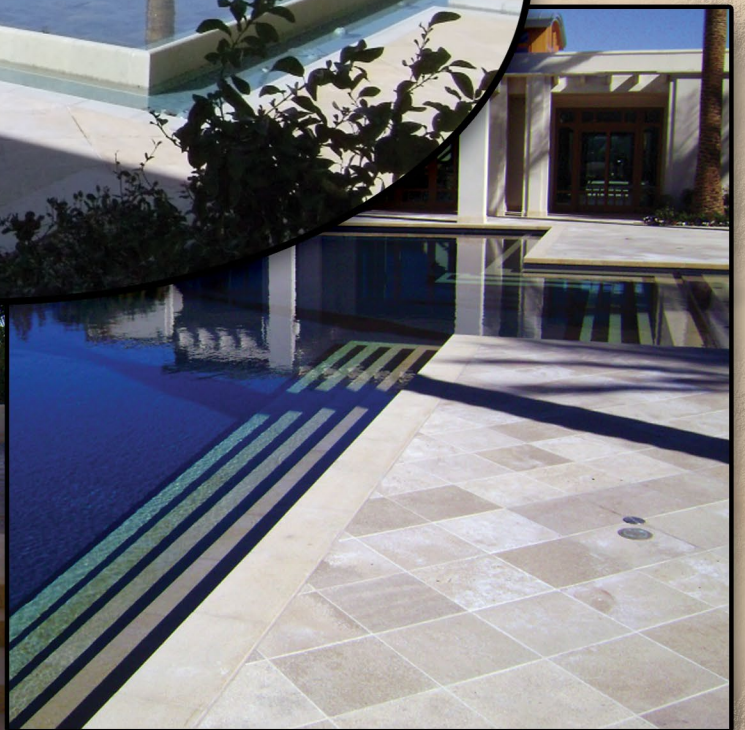
Performing Arts

TEXAS STONE
QUARRIES
GENUINE STONE



Hadrian split-face, in a coursed ashlar pattern, adorns the exterior of this facility. The six multi-story interior columns feature honed Hadrian veneer.

Residential Project



Honed and brushed
Cedar Hill Cream
and Permian Sea
Coral are used in
landscaping and
water features.

TEXASTONE
QUARRIES

Residential Project



An antiqued Permian Sea Coral was used on fireplaces, arches and window/door surrounds.



TEXASTONE
QUARRIES

